

National Register of Historic Places  
Continuation Sheet

Gilbertville Historic District,  
Hardwick, Massachusetts

Section number 10 Page 1

---

UTM References continued

E 18.729960.4687420

F 18.730000.4686920

G 18.730100.4686940

H 18.730100.4686900

I 18.729860.4686760

J 18.729580.4686600

K 18.729700.4687000

L 18.729820.4688000

M 18.730120.4688200

N 18.730200.4688300

O 18.730280.4688140

# National Register of Historic Places Continuation Sheet

Gilbertville Historic District,  
Hardwick, Massachusetts

Section number 10 Page 2

---

## Verbal Boundary Description

The boundaries of the Gilbertville Historic District are shown on the attached assessors map. They correspond to the property lines of the parcels.

## Boundary Justification

The boundaries of the Gilbertville Historic District were drawn to include its best preserved portion of the village within the Town of Hardwick. The district extends along the intersecting roadways to the visual and functional edges where buildings do not retain integrity, new buildings have been constructed, or farmland and second growth forest begin. It includes the surviving mills and public buildings, as well as the majority of the company-built housing.

The location of altered properties as well as the location of new construction were used to mark the best preserved portions of the village. In general, the Massachusetts Historical Commission's concerns were to eliminate compromised portions at the edges of the village, applying in fact higher standards at these places than within the core of the district. This has resulted in the elimination of parts of the village from the district, particularly parts of the privately-owned portions that were located at the edges of the company-owned area. In five sections of the regional arteries, changes in the character of the architectural fabric mark the borders: On Hardwick/Gilbertville Road and Mechanic Street buildings have been omitted from the district because alterations to some of the buildings were deemed to compromise their integrity at a level unacceptable at the edges of the district. The western end of Prospect Street was also omitted due to alterations to the buildings. The outskirts of Church Street and southern-most Main Street have been excluded because of intervening buildings that are either modern or too altered.

**Gilbretville Historic District**  
**Hardwick, MA**  
**District Data Sheet**

| <u>MHC#</u>  | <u>NAME</u>                         | <u>STYLE</u>     | <u>DATE</u>   | <u>STATUS</u> | <u>TYPE</u> |
|--|-------------------------------------|------------------|---------------|---------------|-------------|
| <u>North of the Ware River east to Mechanic Street</u> |                                     |                  |               |               |             |
| <b>Main Street</b>                                     |                                     |                  |               |               |             |
| 48   | Gilbert Mill #1                     | Italianate       | 1860-62, 1883 | C             | (4)B        |
|  | a. Gas House                        | ---              |               | C             | St          |
|  | b. Site of mill #2                  | ---              |               | C             | Si          |
|  | c. Site of dams and mill #3         | ---              |               | C             | Si          |
| 49   | Central MA RR Pass. Depot           | Italianate       | 1887          | C             | B           |
| 50   | Gilbretville Hall                   | Second Empire    | 1863          | C             | B           |
| 51   | Bungalow Duplex                     | Shingle          | 1885-98       | C             | B           |
| 52   | Bungalow Duplex                     | Shingle          | 1885-98       | C             | B           |
| 53   | First Tenement Block 3              | Italianate       | 1860-62       | C             | B           |
| 54   | First Tenement Block 3              | Italianate       | 1860-62       | C             | B           |
| 273  | Site of Tenement Block 6            | ---              | 1860-62       | C             | Si          |
| 55   | Third Tenement Row                  | Colonial Revival | 1911-17       | C             | B           |
| <b>North Street</b>                                    |                                     |                  |               |               |             |
| A  | U.S. Post Office                    | ---              | modern        | NC            | B           |
| B  | House                               | ---              | modern        | NC            | B           |
| 56   | First Tenement Block 3              | Italianate       | 1860-62       | C             | B           |
| 57   | House (gablefront 1 1/2) and Garage | Greek Revival    | unk.          | C             | (2)B        |
| 58   | Second Tenement Row                 | Stick            | 1870-85       | C             | B           |
| 59   | Second Tenement Row                 | Stick            | 1870-85       | C             | B           |
| <b>West Street</b>                                     |                                     |                  |               |               |             |
| 274  | Livery                              | ---              | unk.          | NC            | B           |
| 60   | First Tenement Block 3              | Italianate       | 1860-62       | C             | B           |
| 61   | First Tenement Block 4              | Italianate       | 1860-62       | C             | B           |
| 62   | House (gablefront 1 1/2)            | Greek Revival    | unk.          | C             | B           |
| 63   | First Tenement Block 4              | Italianate       | 1860-62       | C             | B           |

**Gilbretville Historic District  
Hardwick, MA  
District Data Sheet**

| <u>MHC#</u>                             | <u>NAME</u>                        | <u>STYLE</u>      | <u>DATE</u> | <u>STATUS</u> | <u>TYPE</u> |
|---|------------------------------------|-------------------|-------------|---------------|-------------|
| <b>Broad Street</b>                     |                                    |                   |             |               |             |
| 64                                      | Second Tenement Row                | Stick             | 1870-85     | NC            | B           |
| 65                                      | Second Tenement Row                | Stick             | 1870-85     | C             | B           |
| 66                                      | Second Tenement Row                | Stick             | 1870-85     | NC            | B           |
| 67                                      | Second Tenement Row                | Stick             | 1870-85     | C             | B           |
| 68                                      | Second Tenement Row<br>garage      | Stick             | 1870-85     | C             | B           |
| <b>Prospect Street</b>                  |                                    |                   |             |               |             |
| 72                                      | Second Tenement Row and Garage     | Stick             | 1870-85     | C             | (2)B        |
| <b>Parker Court/Brook Street</b>        |                                    |                   |             |               |             |
| 73                                      | House (gable block 2 1/2)          | Italianate        | 1860-62     | C             | B           |
| 74                                      | House (gable block 1 1/2)          | ---               | unk.        | C             | B           |
| <b>East Street</b>                      |                                    |                   |             |               |             |
| 75                                      | Bungalow Duplex DOE #2             | Shingle           | 1885-98     | C             | B           |
| 76                                      | First Tenement Block 4             | Italianate        | 1860-62     | C             | B           |
| <u>South and east of the Ware River</u> |                                    |                   |             |               |             |
| <b>Main Street</b>                      |                                    |                   |             |               |             |
| 77                                      | Courthouse/Post Office             | Classical Revival | 1898-1911   | C             | B           |
| 78                                      | First Duplex A                     | Italianate        | 1862-64     | C             | B           |
| 79                                      | First Duplex A                     | Italianate        | 1862-64     | C             | B           |
| 80                                      | First Duplex A                     | Italianate        | 1862-64     | C             | B           |
| 81                                      | George H. Gilbert School           | Classical Revival | 1903        | C             | B           |
| 82                                      | First Duplex A                     | Italianate        | 1862-64     | C             | B           |
| 83                                      | First Duplex A<br>garage           | Italianate        | 1862-64     | C             | B           |
| 84                                      | First Duplex A                     | ---               | ---         | NC            | B           |
| 85                                      | First Duplex A                     | Italianate        | 1862-64     | C             | B           |
| 86                                      | First Duplex A with Store Addition | Italianate        | 1862-64     | C             | B           |
| 87                                      | Warehouse                          | Italianate        | 1870-98     | C             | B           |
| C                                       | store                              | ---               | modern      | NC            | B           |

Gilbretville Historic District  
 Hardwick, MA  
 District Data Sheet

| <u>MHC#</u>                  | <u>NAME</u>                      | <u>STYLE</u>         | <u>DATE</u> | <u>STATUS</u> | <u>TYPE</u> |
|------------------------------|----------------------------------|----------------------|-------------|---------------|-------------|
| <b>Bridge Street/Terrace</b> |                                  |                      |             |               |             |
| 900                          | Covered Bridge NR 1886           | timber through truss | 1886        | C             | St          |
| 88                           | House (gable block 2)            | ---                  | unk.        | C             | B           |
| 89                           | First Tenement Block 4           | Italianate           | 1862-64     | C             | B           |
| 90                           | First Tenement Block 4           | Italianate           | 1862-64     | C             | B           |
| 91                           | First Tenement Block 4           | Italianate           | 1862-64     | C             | B           |
| 92                           | First Tenement Block 4           | Italianate           | 1862-64     | C             | B           |
| 93                           | First Tenement Block 4           | Italianate           | 1862-64     | C             | B           |
| <b>Grove Street</b>          |                                  |                      |             |               |             |
| 94                           | Third Tenement Row               | Colonial Revival     | 1911-17     | C             | B           |
| 95                           | First Duplex A                   | Italianate           | 1862-64     | C             | B           |
| <b>Highland Terrace</b>      |                                  |                      |             |               |             |
| D                            | Telephone Co. Building           | ---                  | modern      | NC            | B           |
| 96                           | First Duplex A                   | Italianate           | 1862-64     | C             | B           |
| 97                           | First Duplex A                   | Italianate           | 1862-64     | NC            | B           |
| 98                           | First Duplex A                   | Italianate           | 1862-64     | C             | B           |
| 99                           | Late Duplex                      | Stick                | 1883        | C             | B           |
| <b>Summit Avenue</b>         |                                  |                      |             |               |             |
| 100                          | Mrs. Adams House                 | Italianate           | 1870-85     | C             | B           |
| <b>New Braintree Road</b>    |                                  |                      |             |               |             |
| 101                          | Ward House                       | Queen Anne           | 1870-85     | C             | B           |
| 102                          | Last Duplex                      | Colonial Revival     | 1898-1911   | C             | B           |
| 103                          | Richardson House                 | Queen Anne           | 1885-1898   | C             | B           |
| 104                          | Bungalow Duplex                  | Shingle              | 1885-98     | C             | B           |
| 105                          | Late Duplex                      | Stick                | ca. 1883    | C             | B           |
| <b>Main Street</b>           |                                  |                      |             |               |             |
| 106                          | Last Duplex                      | Colonial Revival     | 1898-1911   | C             | B           |
| 107                          | Barlow House (gable block 1 1/2) | Greek Revival        | unk.        | C             | B           |
| 108                          | Ware River RR Station            | Italianate           | 1870        | C             | B           |

**Gilbretville Historic District  
Hardwick, MA  
District Data Sheet**

| <u>MHC#</u>                    | <u>NAME</u>                         | <u>STYLE</u>      | <u>DATE</u> | <u>STATUS</u> | <u>TYPE</u> |
|--------------------------------|-------------------------------------|-------------------|-------------|---------------|-------------|
| 109                            | Ware River RR Depot                 | Italianate        | 1870        | C             | B           |
| E                              | House                               | ---               | modern      | NC            | B           |
| 110                            | Gilbretville Public Library         | Classical Revival | 1912        | C             | B           |
| 111                            | Congregational Church & Chapel      | Gothic Revival    | 1874, 1884  | C             | B           |
| 112                            | Congregational Parsonage            | Stick             | 1884        | C             | B           |
| 113                            | Hardwick High School                | Classical Revival | 1910        | C             | B           |
| F                              | House                               | ---               | modern      | NC            | B           |
| 114                            | Power Plant (now Foundry)           | ---               | 1912        | C             | (3)B        |
| 115                            | Gilbert Mill #4                     | Italianate        | 1867        | C             | (3)B        |
| 116                            | First Duplex A                      | Italianate        | 1862-64     | C             | B           |
| 117                            | First Duplex B                      | Italianate        | 1862-64     | C             | B           |
|                                | garage                              | ---               | ---         | NC            | B           |
| 118                            | First Duplex A                      | Italianate        | 1862-64     | C             | B           |
| <b>Main Street (Continued)</b> |                                     |                   |             |               |             |
| 119                            | First Duplex A                      | Italianate        | 1862-64     | C             | B           |
| 120                            | First Duplex B DOE #63              | Italianate        | 1862-64     | C             | B           |
| 121                            | First Tenement Row                  | Italianate        | 1870-85     | C             | B           |
| 122                            | First Tenement Row                  | Italianate        | 1870-85     | C             | B           |
| G                              | Gas station                         | ---               | modern      | NC            | B           |
| 123                            | Third Tenement Row                  | Colonial Revival  | 1911-17     | C             | B           |
| 124                            | Third Tenement Row                  | Colonial Revival  | 1911-17     | C             | B           |
| 125                            | First Tenement Row                  | Italianate        | 1870-85     | NC            | B           |
| 126                            | Third Tenement Row                  | Colonial Revival  | 1911-17     | C             | B           |
| 127                            | First Tenement Block                | Italianate        | 1862-64     | C             | B           |
| 128                            | First Tenement Row                  | Italianate        | 1870-85     | C             | B           |
| 129                            | Dexter Block                        | Italianate        | 1870-98     | C             | B           |
| 130                            | Bungalow Duplex                     | Shingle           | 1885-98     | C             | B           |
| H                              | House                               | ---               | modern      | NC            | B           |
| <b>Old Mill Road</b>           |                                     |                   |             |               |             |
| 275                            | House (gablefront 2 1/2) and garage | ---               | 1870-98     | C             | B           |
| 266                            | Sawyer's House DOE                  | Greek Revival     | ca. 1865    | C             | B           |

Gilbretville Historic District  
Hardwick, MA  
District Data Sheet

| MHC#   | NAME  | STYLE              | DATE          | STATUS | TYPE       |
|--|---|--------------------|---------------|--------|------------|
| <b>High Street</b>                                     |   |                    |               |        |            |
| 131  | House/former School #2                        | ---                | 1864          | C      | B          |
| 132  | Bungalow Duplex                               | Shingle            | 1885-98       | C      | B          |
| 133  | Bungalow Duplex                               | Shingle            | 1885-98       | C      | B          |
| 134  | Third Tenement Row and garage                 | Colonial Revival   | 1911-17       | C      | B          |
| I  | House   | ---                | modern        | NC     | B          |
| 135  | Bungalow Duplex                               | Shingle            | 1885-98       | C      | B          |
| 136  | Third Tenement Row                            | Colonial Revival   | 1911-17       | C      | B          |
| J  | House   | ---                | modern        | NC     | B          |
| 137  | Last Tenement Row DOE 34 & 38                 | Shingle            | 1917-31       | C      | B          |
| 138  | Last Tenement Row                             | Shingle            | 1917-31       | C      | B          |
| K  | House   | ---                | modern        | NC     | B          |
| <b>Joselyn Road</b>                                    |   |                    |               |        |            |
| 139  | Bungalow Duplex                               | Shingle            | 1885-98       | C      | B          |
| 275  | Bungalow Duplex                               | Shingle            | 1885-98       | C      | B          |
| 152  | Puldoski Hall                                 | ---                | ca. 1918      | C      | B          |
| 153  | Tenement Row                                  | Craftsman          | ca. 1900      | C      | B          |
| <u>North of Ware River and east of Mechanic Street</u> |   |                    |               |        |            |
| <b>Church Street</b>                                   |   |                    |               |        |            |
| 140  | Winsor Hotel                                  | Victorian Eclectic | by 1898       | C      | B          |
| L  | Dorman's Garage                               | ---                | modern        | NC     | B          |
| 141  | Two-part Commercial Block                     | False Front        | betw. 1917-31 | C      | B          |
| 142  | One-part Commercial Block                     | False Front        | 1911-17       | C      | B          |
| 143  | Two-part Commercial Block                     | False Front        | 1898-1911     | C      | B          |
| 144  | Old Fellows Hall/store                        | altered/parapet    | 1898-1911     | C      | B          |
| 145  | House (gable block 2 1/2)                     | ---                | 1989-1911     | C      | B          |
| 146  | Store/E. Long House and Garage                | was False Front    | by 1898       | C      | B          |
| 147  | Two-family House (gable block 1 1/2)          | gable block 1 1/2+ | by 1898       | C      | B          |
| 148  | J. Hurley Two-family House                    | ---                | by 1898       | C      | B          |
| 149  | Crawford Hse, Barn, Garage and Retaining Wall | Italianate         | ca. 1870      | C      | (3)B<br>St |
| 150  | W.H. Phelps House and Garage                  | Queen Anne         | by 1898       | C      | (2)B       |

**Gilbreville Historic District  
Hardwick, MA  
District Data Sheet**

| <u>MHC#</u> | <u>NAME</u>  | <u>STYLE</u>  | <u>DATE</u>                                       | <u>STATUS</u>                   | <u>TYPE</u>                                     |
|-------------|--|---|---|---------------------------------|---|
| 151         | St. Aloysius Church,<br>a. Rectory and Bell<br>b. Bell<br>c. Carriage House<br>d. School<br>e. Site of Convent | Gothic<br>Colonial Revival<br>---<br>Vict. Eclectic<br>Stick<br>---<br>Colonial Revival | 1872-1911<br>---<br>---<br>1898-1911<br>1898-1911 | C<br>C<br>C<br>C<br>C<br>C<br>C | B<br>B<br>OB<br>B<br>B<br>Si<br>B<br>(2)B<br>St |
| 154         | Genedreau House  | Italianate  | ---   | C                               | B   |
| 155         | House (gable block 2 1/2), Garage<br>Retaining Wall  | ---   | ---   | C                               | B   |
|             | <b>Mindel Street</b>   |   |   |                                 |   |
| 184         | Dexter Tenement  | ---   | by 1898   | C                               | B   |
| 185         | Dexter Tenement  | ---   | by 1898   | C                               | B   |
|             | <b>DuHamel Court</b>   |   |   |                                 |   |
| 183         | Dexter Tenement  | ---   | by 1898   | C                               | B   |
| 189         | Dexter Tenement  | ---   | by 1898   | C                               | B   |
|             | <b>C- Historic Resource</b>  |   |   |                                 |   |
|             | <b>NC- modern</b>  |   |   |                                 |   |
|             | (except where building is named)   |   |   |                                 |   |
|             | 153 Resources  |   |   |                                 | St- structure                                   |
|             | 124 Contributing Buildings   |   |   |                                 | Si- site  |
|             | 20 Noncontributing Buildings   |   |   |                                 |   |
|             | 4 Contributing Sites   |   |   |                                 |   |
|             | 4 Contributing Structures  |   |   |                                 |   |
|             | 1 Contributing Object  |   |   |                                 |   |







334

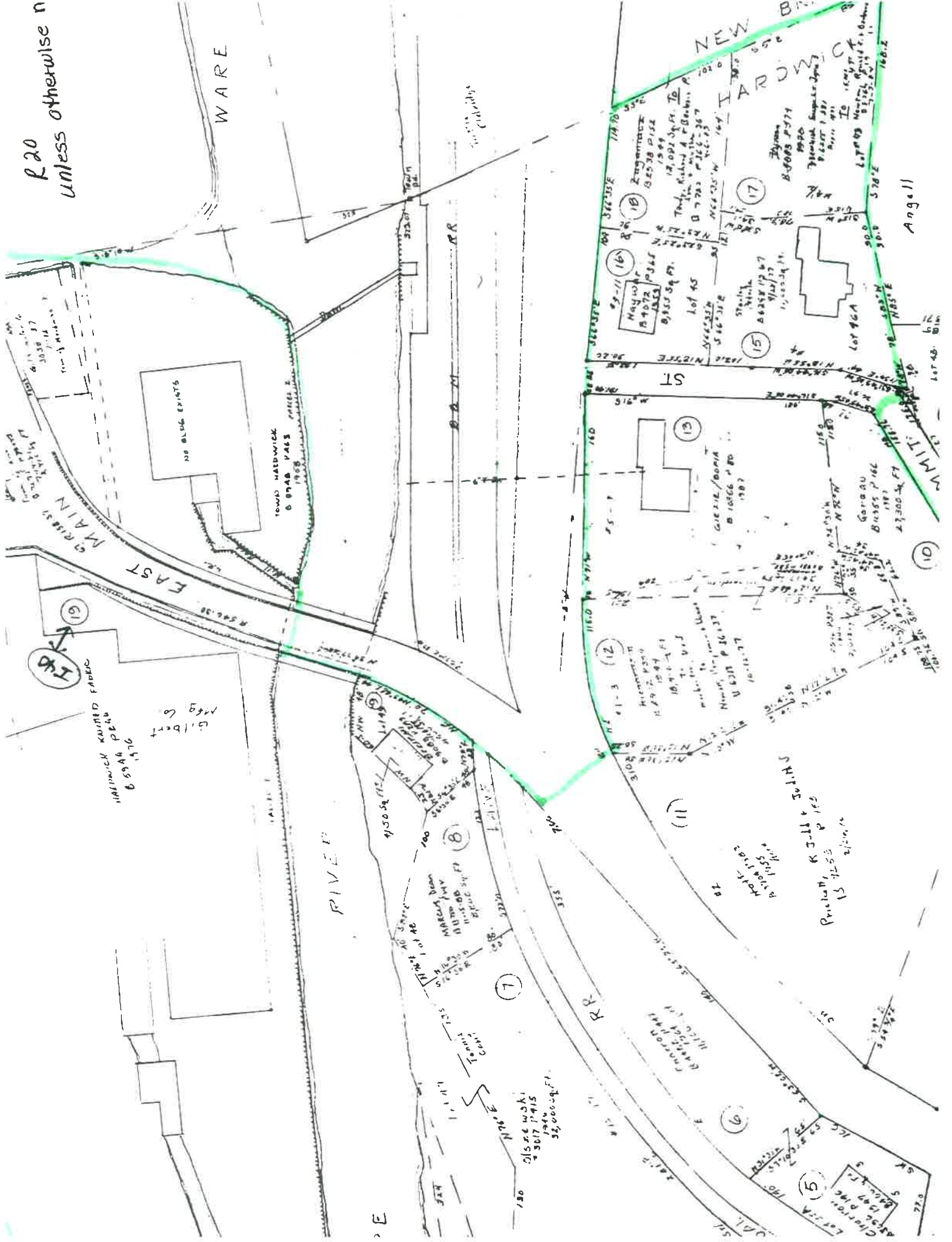
1891

HARWICK

WARE



p20 unless otherwise n



NO BLOB EXPTS

TOWNS HEADWICK  
6 8948 PAGES APRIL 2  
1908

WALTON KAUTED FABRIC  
Mfg Co  
6 5594 P 240  
6 5596

Gilbert  
Mfg Co

RIVER

E

2156 waki  
1906  
4 3017 P 415  
35000 sq ft

R R

ST

NEW BRIDGE

WARE

17

16

15

14

13

12

11

10

9

8

7

6

5

4

3

2

1

0

180

170

160

150

140

130

120

110

100

90

80

70

60

50

40

30

20

10

0

10

20

30

40

50

60

70

80

90

100

110

120

130

140

150

160

170

180

190

200

210

220

230

240

250

260

270

280

290

300

310

320

330

340

350

360

370

380

390

400

410

420

430

440

450

460

470

480

490

500

510

520

530

540

550

560

570

580

590

600

610

620

630

640

650

660

670

680

690

700

710

720

730

740

750

760

770

780

790

800

810

820

830

840

850

860

870

880

890

900

910

920

930

940

950

960

970

980

990

1000

1010

1020

1030

1040

1050

1060

1070

1080

1090

1100

1110

1120

1130

1140

1150

1160

1170

1180

1190

1200

1210

1220

1230

1240

1250

1260

1270

1280

1290

1300

1310

1320

1330

1340

1350

1360

1370

1380

1390

1400

1410

1420

1430

1440

1450

1460

1470

1480

1490

1500

1510

1520

1530

1540

1550

1560

1570

1580

1590

1600

1610

1620

1630

1640

1650

1660

1670

1680

1690

1700

1710

1720

1730

1740

1750

1760

1770

1780

1790

1800

1810

1820

1830

1840

1850

1860

1870

1880

1890

1900

1910

1920

1930

1940

1950

1960

1970

1980

1990

2000

2010

2020

2030

2040

2050

2060

2070

2080

2090

2100

2110

2120

2130

2140

2150

2160

2170

2180

2190

2200

2210

2220

2230

2240

2250

2260

2270

2280

2290

2300

2310

2320

2330

2340

2350

2360

2370

2380

2390

2400

2410

2420

2430

2440

2450

2460

2470

2480

2490

2500

2510

2520

2530

2540

2550

2560

2570

2580

2590

2600

29  
March 2  
2000 of 14

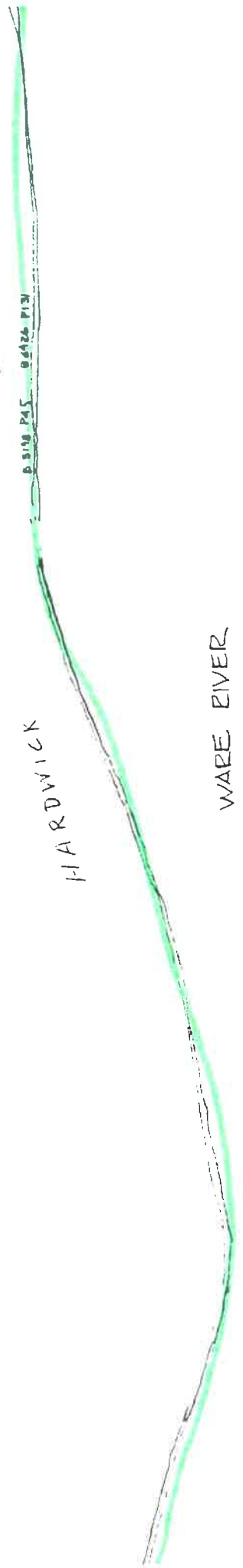
2-14-04  
Ware 04

JOE PLOUFFE to Class for Raymond  
0 3004 P 235  
6954 P 30  
2-14-04

0 3138 P 45  
0 6924 P 31

HARDWICK

WARE RIVER



10  
11  
12  
13  
14  
15  
16  
17  
18  
19  
20  
21  
22  
23  
24  
25  
26  
27  
28  
29  
30  
31  
32  
33  
34  
35  
36  
37  
38  
39  
40  
41  
42  
43  
44  
45  
46  
47  
48  
49  
50  
51  
52  
53  
54  
55  
56  
57  
58  
59  
60  
61  
62  
63  
64  
65  
66  
67  
68  
69  
70  
71  
72  
73  
74  
75  
76  
77  
78  
79  
80  
81  
82  
83  
84  
85  
86  
87  
88  
89  
90  
91  
92  
93  
94  
95  
96  
97  
98  
99  
100



58/1  
58/10  
58/2  
58/25

Charles & William Hement  
1/17/85  
BK. 11875/a29

RIVER

WARE

OH I

WARE

OLD WA



B 3395 Pass  
4.22 Ac.



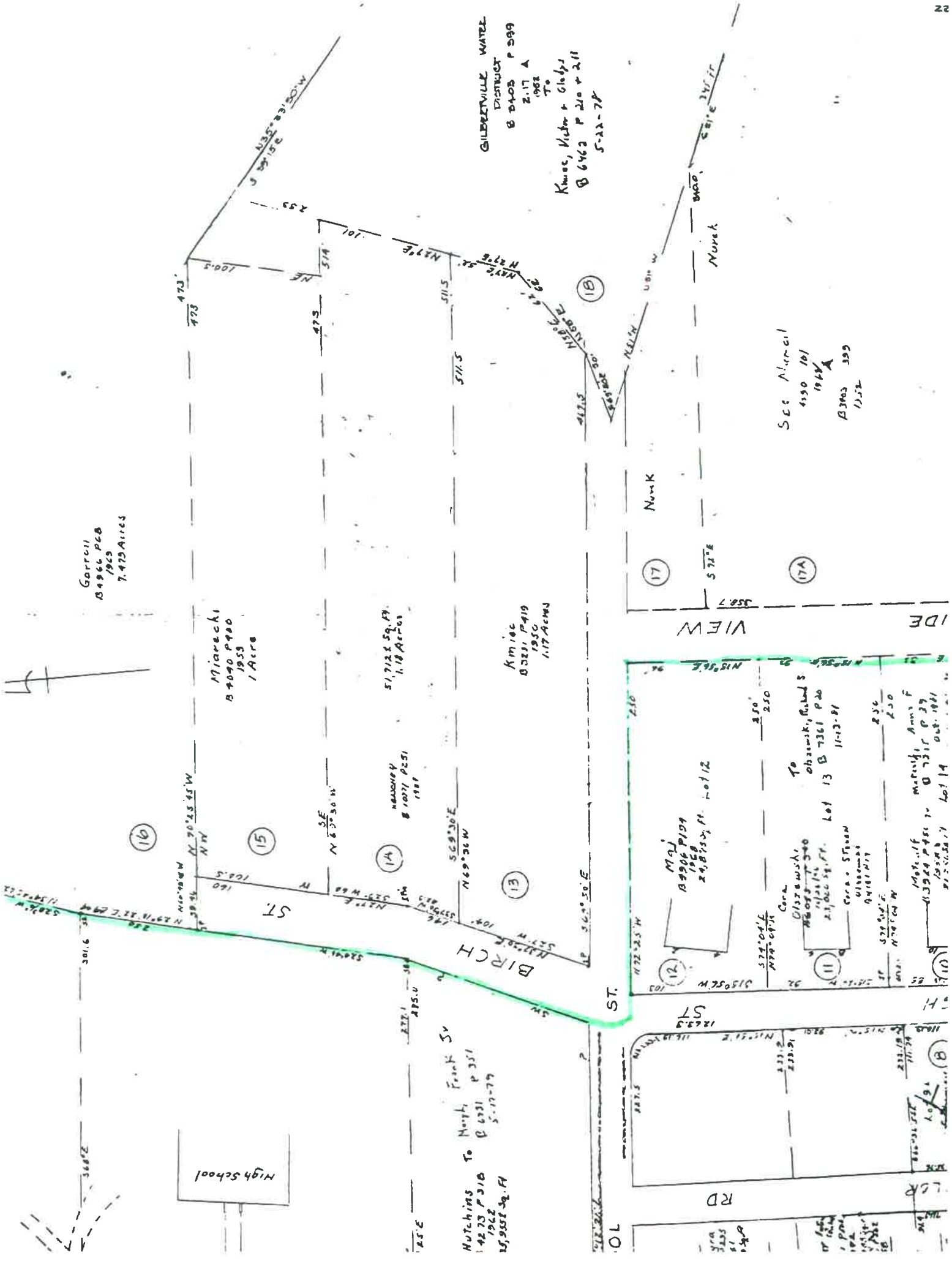
RIVER

WARE



Town of  
WARE





Gortali  
B 4966 P 68  
1963  
7.473 Acres

Miarecki  
B 4090 P 80  
1953  
1 Acre

51,712 sq. ft.  
1.18 Acres

Kimiec  
B 5231 P 419  
1950  
1.17 Acres

GILBERTVILLE WATER  
DISTRICT  
B 6403 P 599  
2.17 A  
1962  
To  
Kwoec, Victor + Gladys  
B 6463 P 210 + 211  
5-22-78

See Aerial  
4550 101  
1944  
B 3403 309  
1352

High School

Notchins To North Frank Sv  
B 4273 P 310  
1962  
15,955 sq. ft  
5-17-79

Maj  
B 9906 P 109  
1958  
2,987 sq. ft. Lot 12

To  
obrowski, Richard S  
B 3964 P 81  
1954  
2,102 sq. ft. Lot 13  
11-13-51

Mrs. Jif  
B 3964 P 81  
1954  
2,102 sq. ft. Lot 14  
08-19-51

VIEW ST

BIRCH ST

ST.

ST

RD

CR

Mumk

Morek

(16)

(15)

(14)

(13)

(17)

(17A)

(18)

(11)

(12)

(13)

(14)

(15)

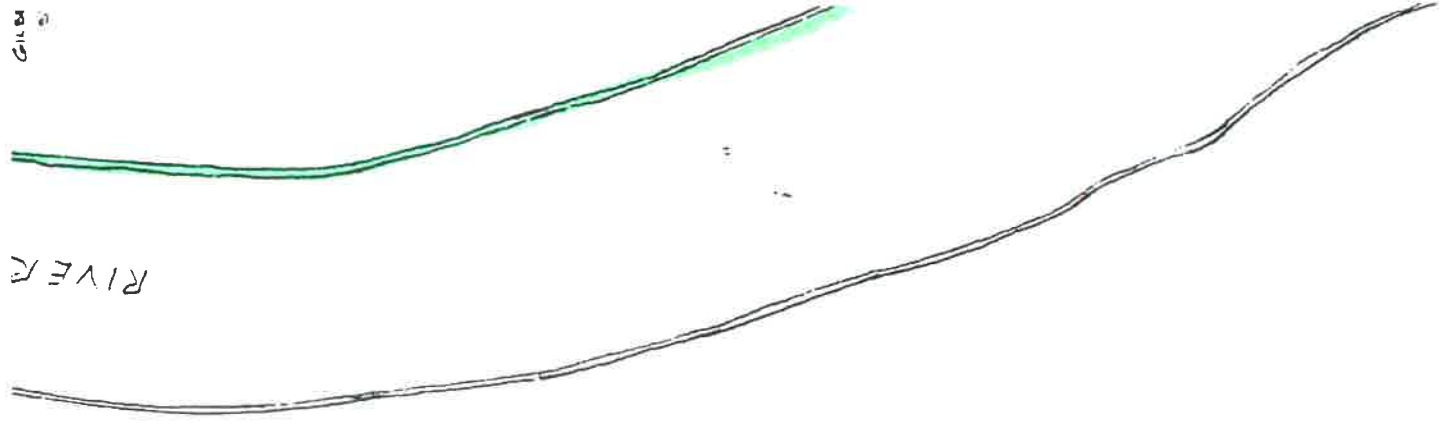
(16)

(17)

(18)

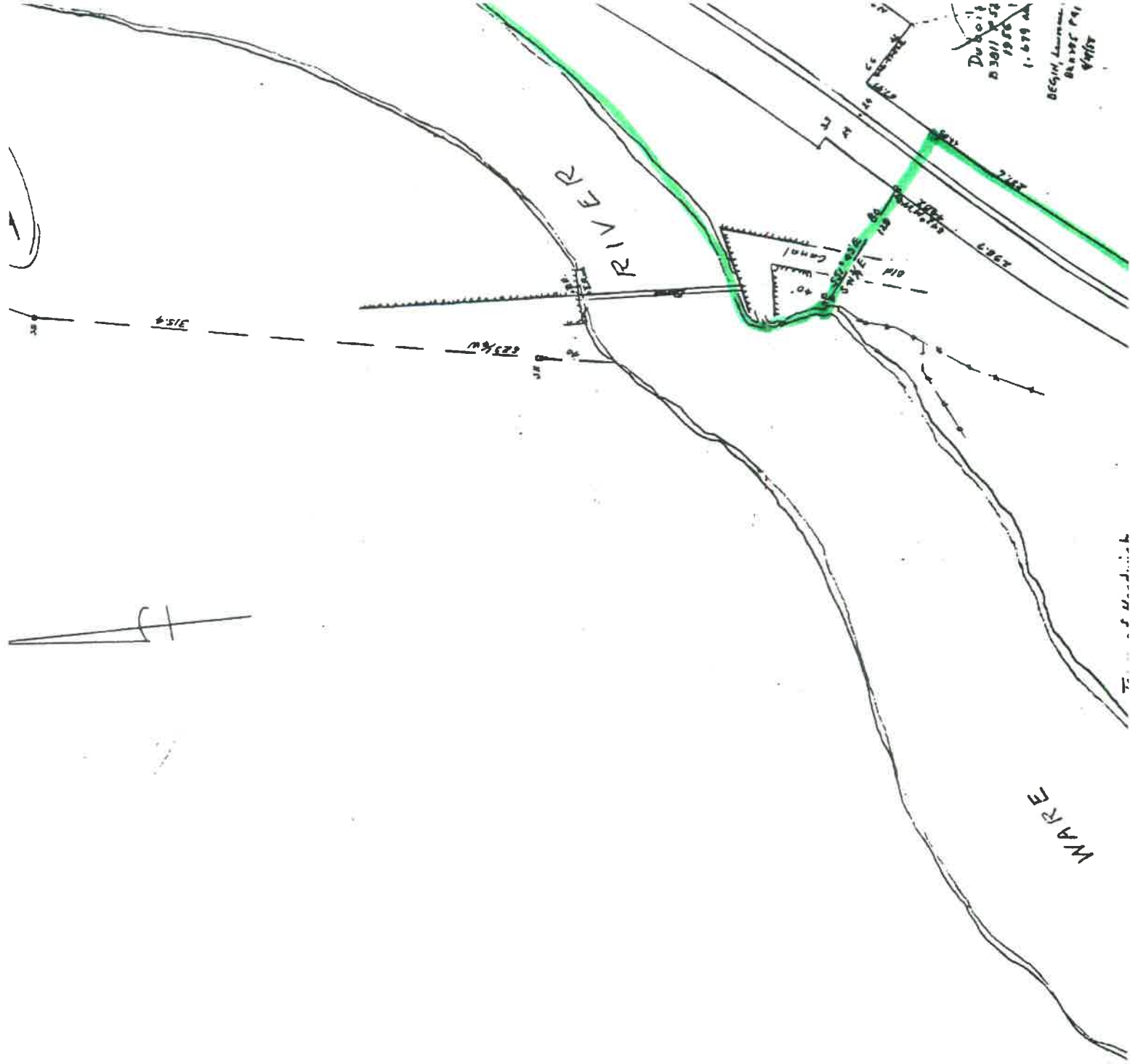
6119

RIVER



(





Du Bois  
1830/1852  
1852/1861  
1861/1879 ad  
1879/1887  
1887/1891  
1891/1898

WARE

RIVER

Canal

315

223km



OLD  
canal

220  
③

Dubois, Messrs. Antenna, II  
3811 127  
JATC  
DEGIN, Jr., Law firm of James C  
1300 N. 22nd St  
4/19/68

①  
I 40



②  
I 40

Schott  
1946  
9.4 Acres

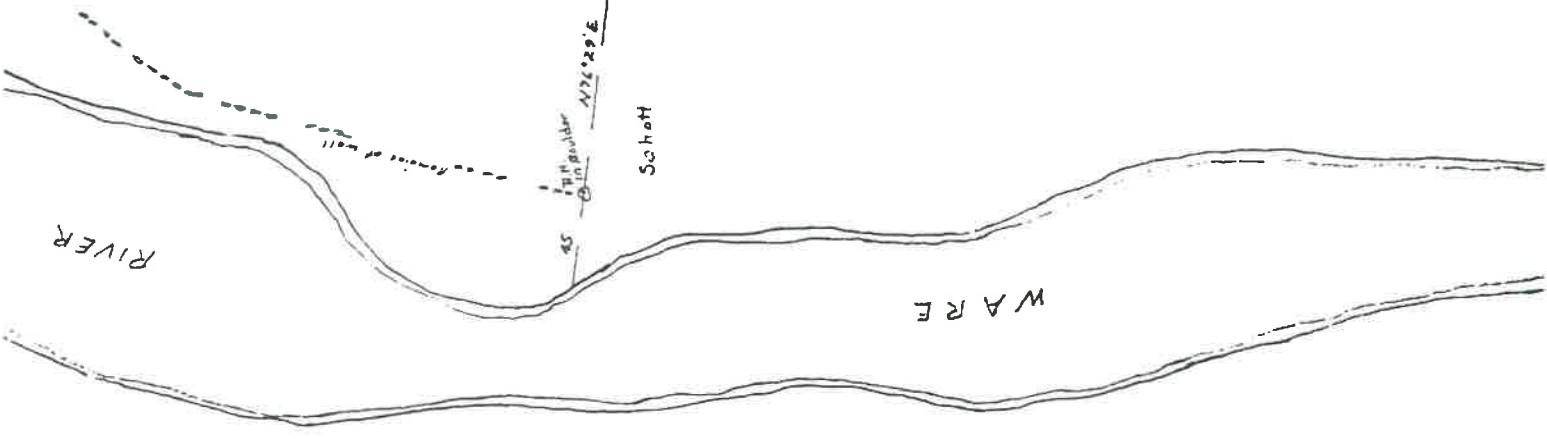
Canal

Town of Hardwick  
Sewage Treatment Plant

207.11

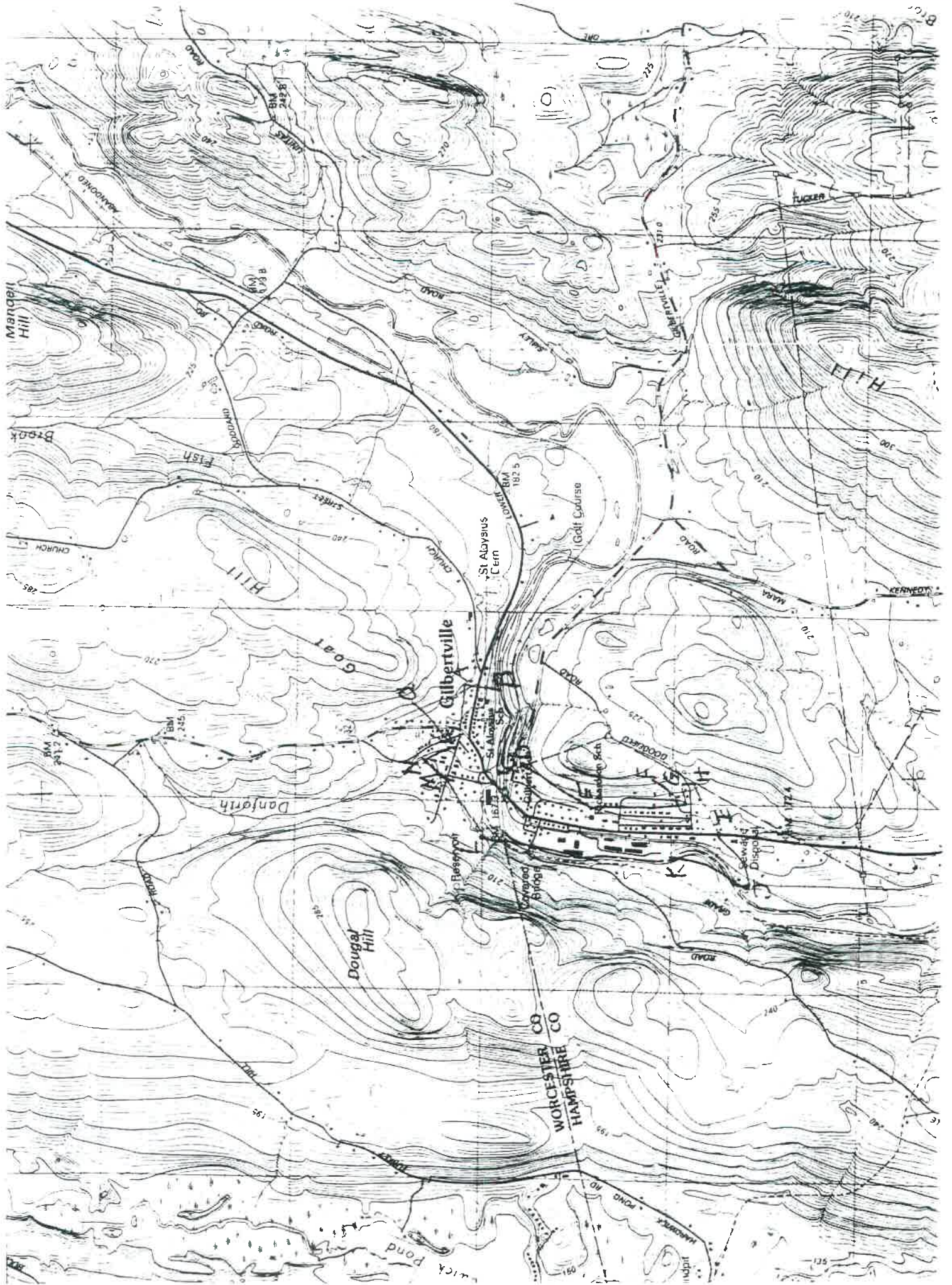
178.20 E

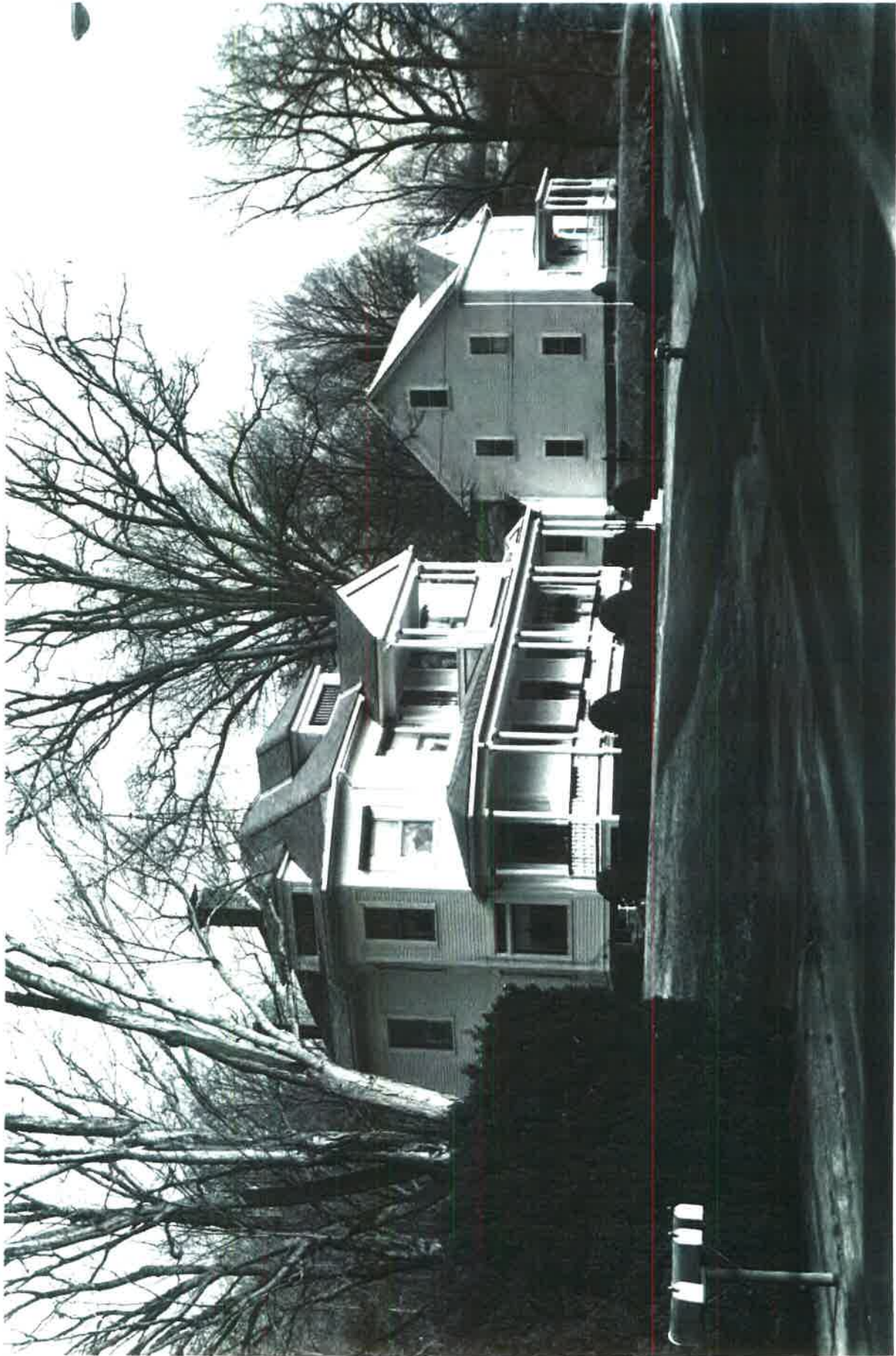
Schott



RIVER

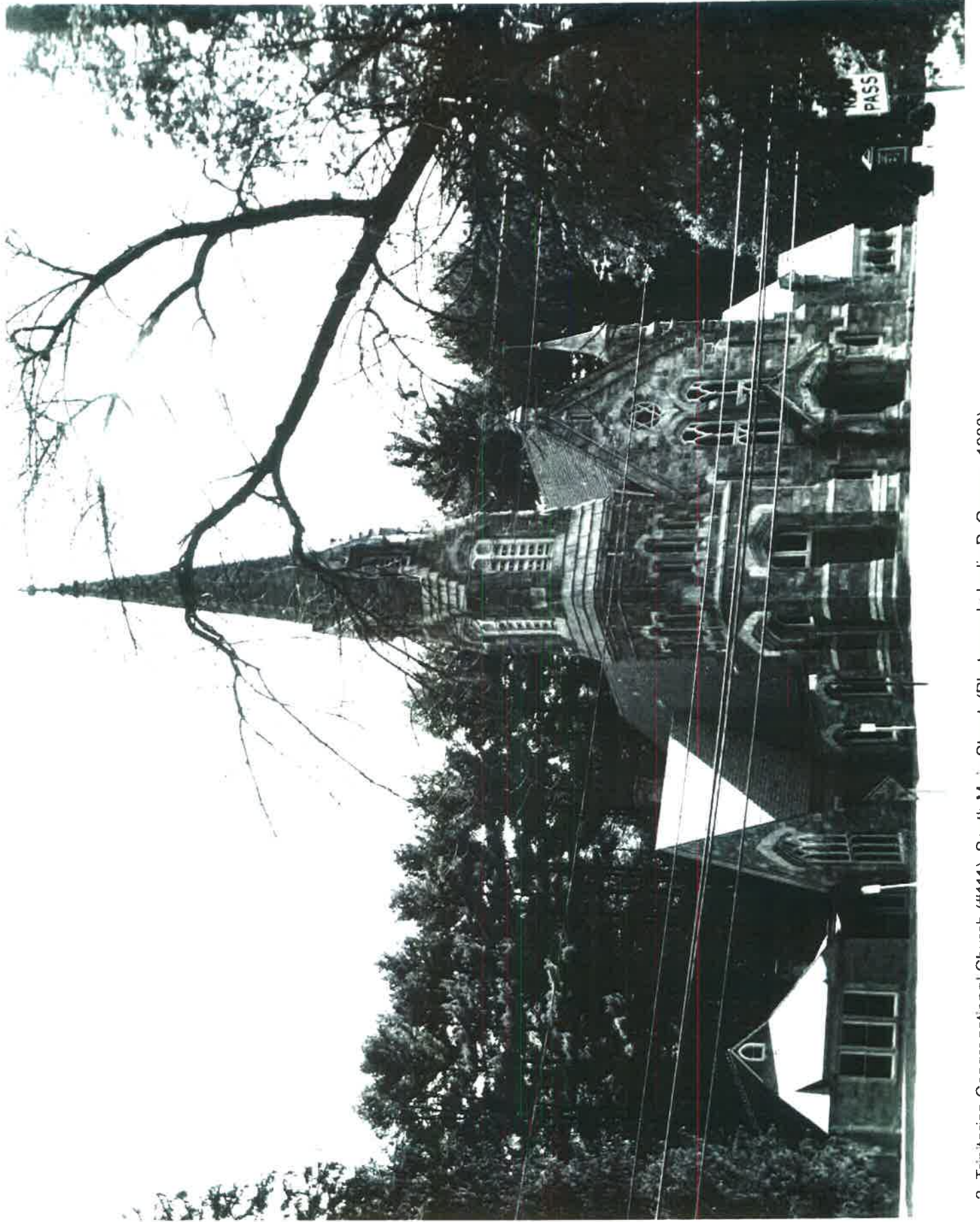
WARE





1. Genedreau House (#154) and House (#155) on Church Street (Photograph: Claire W. Dempsey, April 1990)

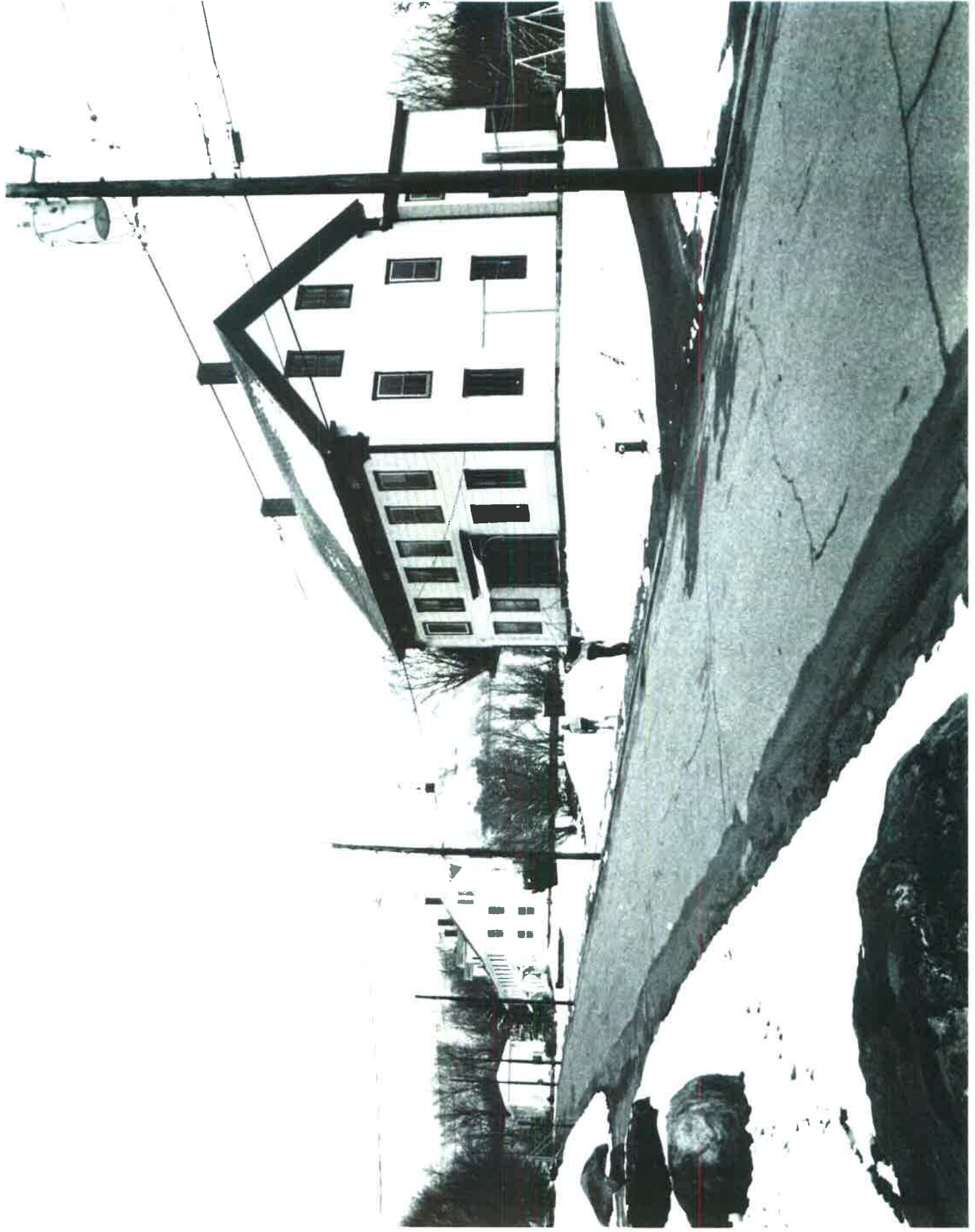




2. Trinitarian Congregational Church (#111), South Main Street. (Photograph: Lydia B. Graves, 1988)



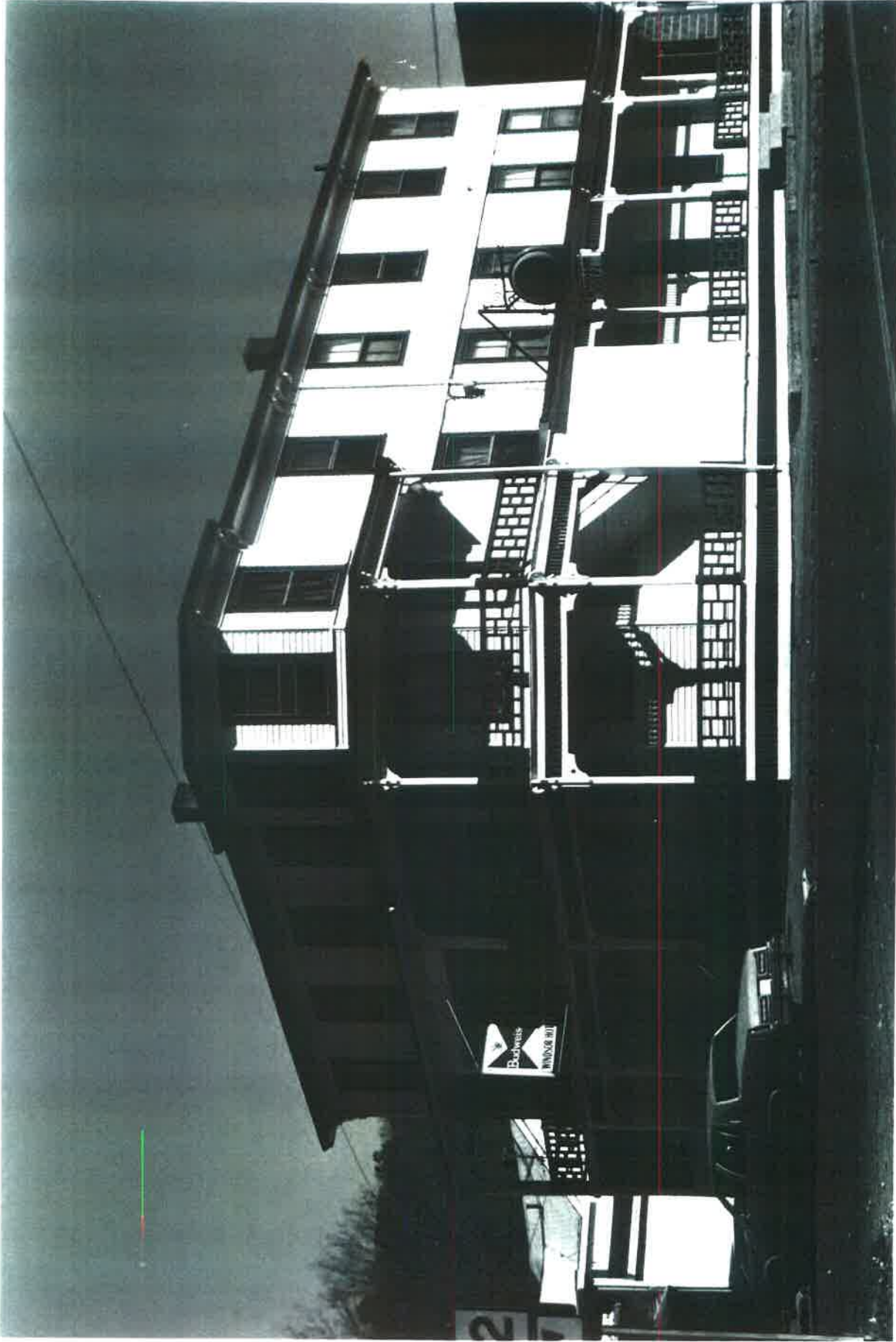
3. Main Street Duplexes. Left to right: First Duplex A (#84), First Duplex A (#85), First Duplex A (#83), First Duplex A (#82), First Duplex A (#80).  
(Photograph: Claire W. Dempsey, 1991)



4. North Street. Left to right: Second Tenement Row (#58); House (#57); First Tenement Block 3 (#56). (Photograph: Claire W. Dempsey, 1991)



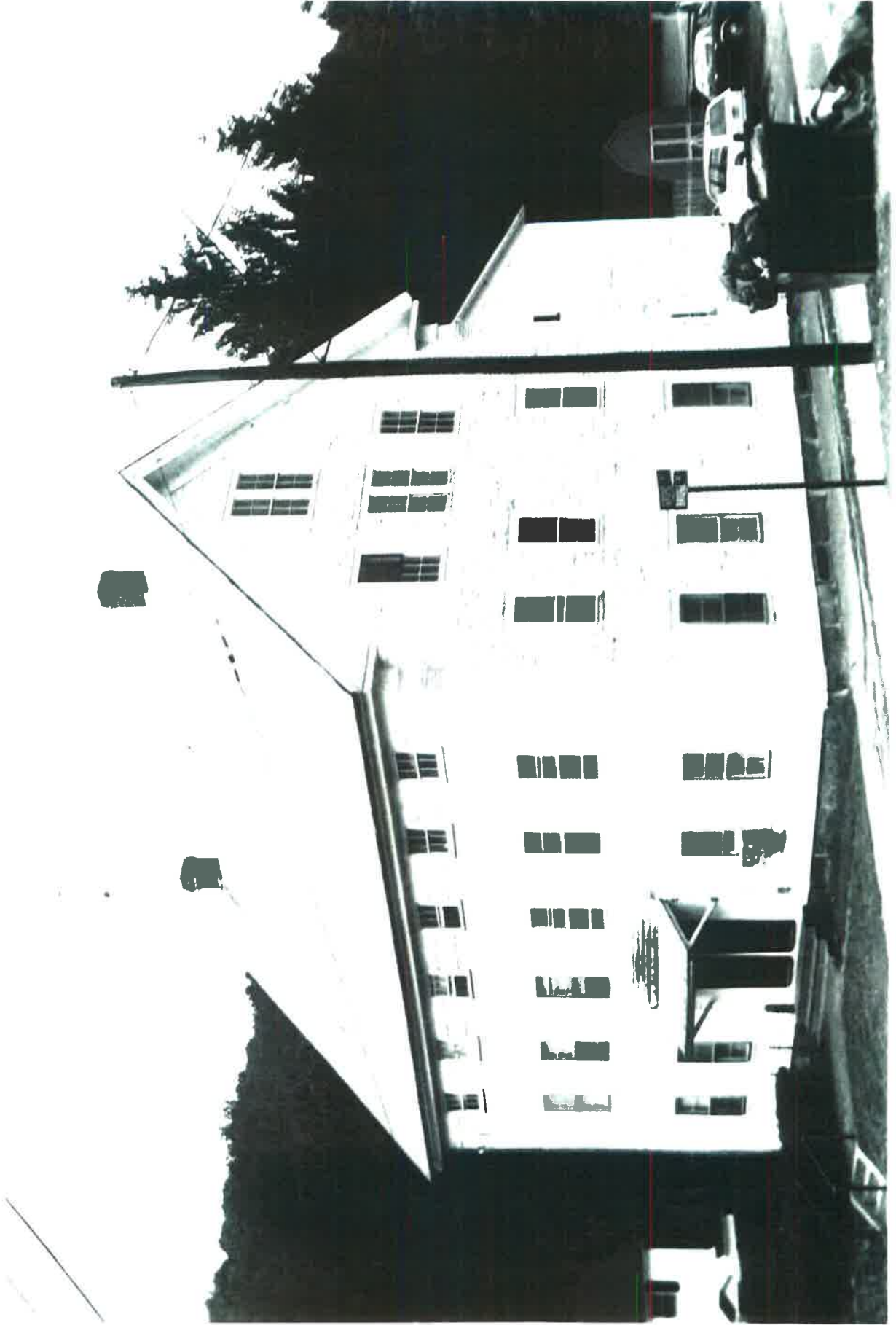
5. Main Street (south). First Tenement Row (#122); Third Tenement Row (#123). (Photograph: Claire W. Dempsey, 1991)



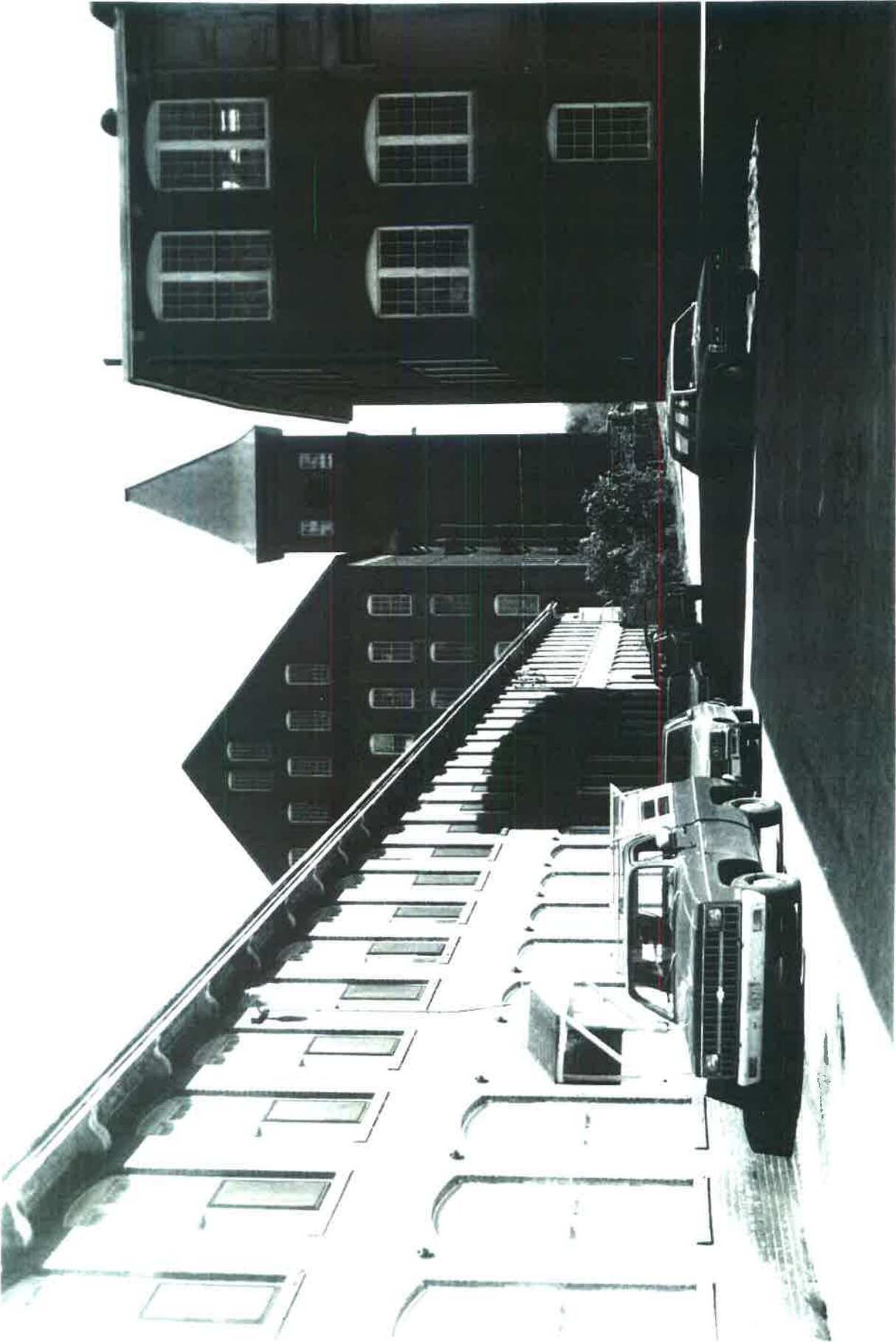
6. Winsor Hotel (#140), corner of Church Street and Hardwick Road. (Photograph: Lydia B. Graves, 1988)



7. Bungalow Duplex (#51), Main Street. (Photograph: Lydia B. Graves, 1988)

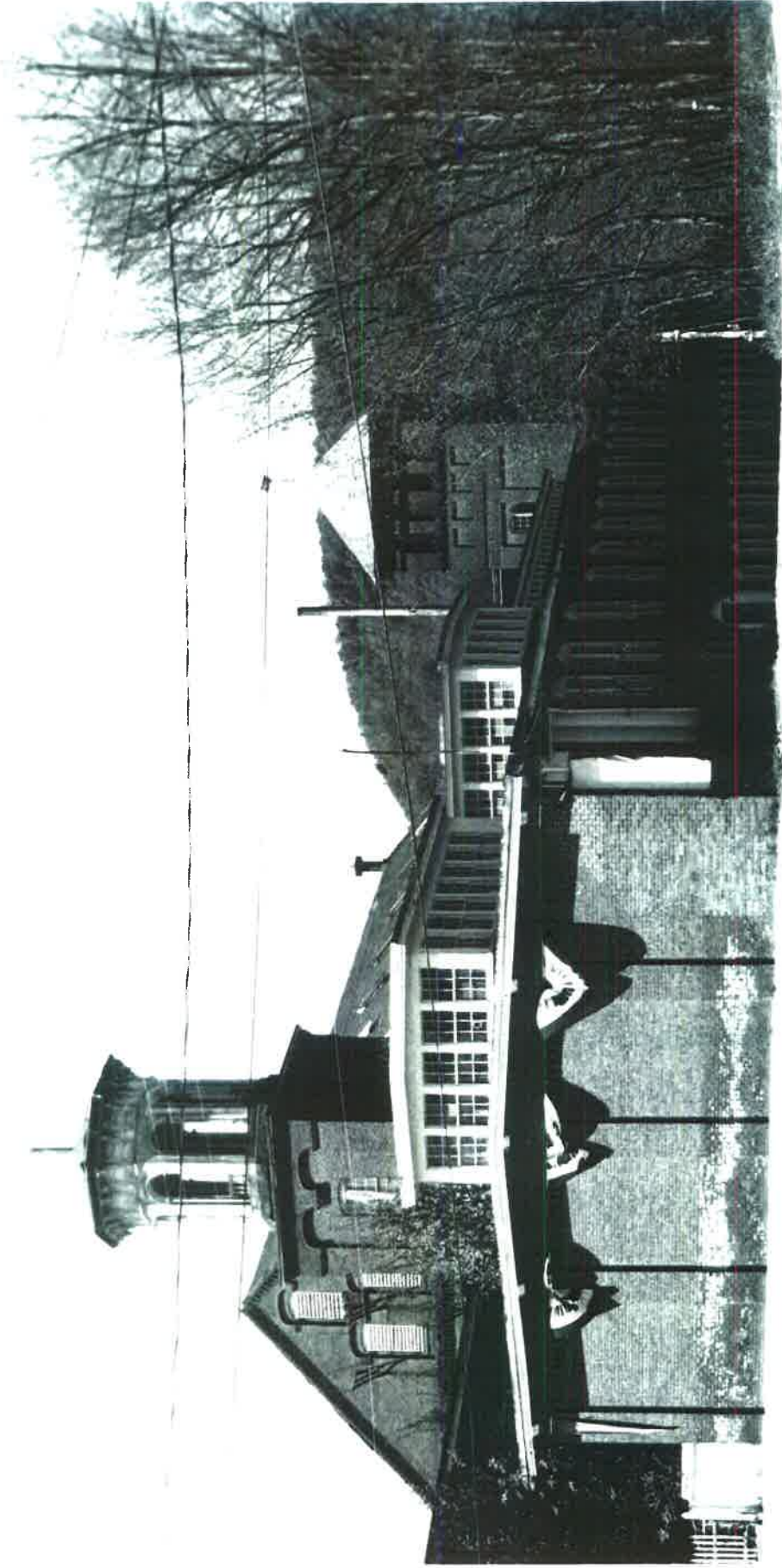


8. First Tenement Block 4 (#89), Bridge Street. (Photograph: Lydia B. Graves, 1988)



9. Gilbert Mill No. 4 (#115), South Main Street. (Photograph: Claire W. Dempsey, c. 1990)





10. Gilbert Mill No. 1 (#48), Main Street. (Photograph: Claire W. Dempsey, 1989)